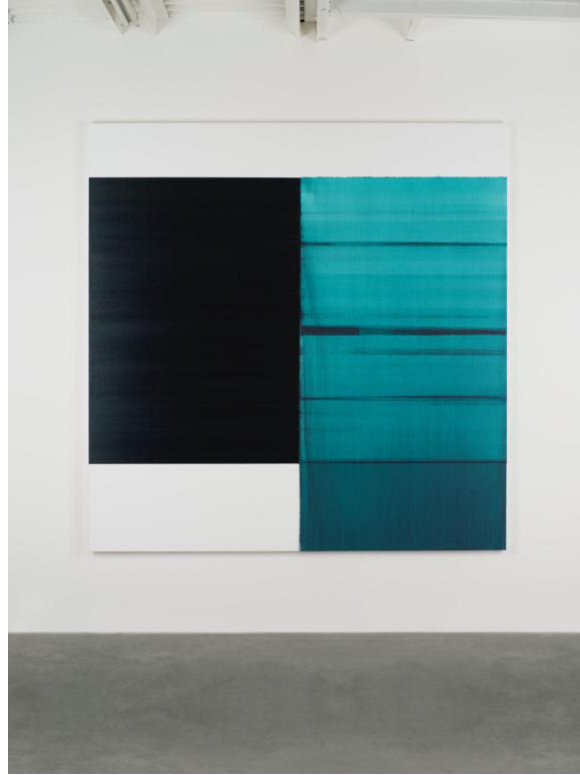


SEANKELLY



Art Basel Miami Beach

Booth D11

Miami Beach Convention Center

Preview days: November 30–December 1

Public days: December 2–4

Sean Kelly is delighted to return to Art Basel Miami Beach in person with a booth that presents a number of particularly thought-provoking visual and conceptual dialogs between artworks. Our booth will feature a curated group of new paintings, sculptures, and photographs by a selection of the gallery's artists, including Dawoud Bey, James Casebere, Jose Dávila, Antony Gormley, Laurent Grasso, Callum Innes, Hugo McCloud, Sam Moyer, Mariko Mori, Alec Soth, Janaina Tschäpe and Kehinde Wiley. In addition, we will show iconic historical works by Marina Abramovic, Candida Höfer, Idris Khan, Joseph Kosuth, Loló Soldevilla and Frank Thiel.

For more information on the artists and works presented, please visit skny.com

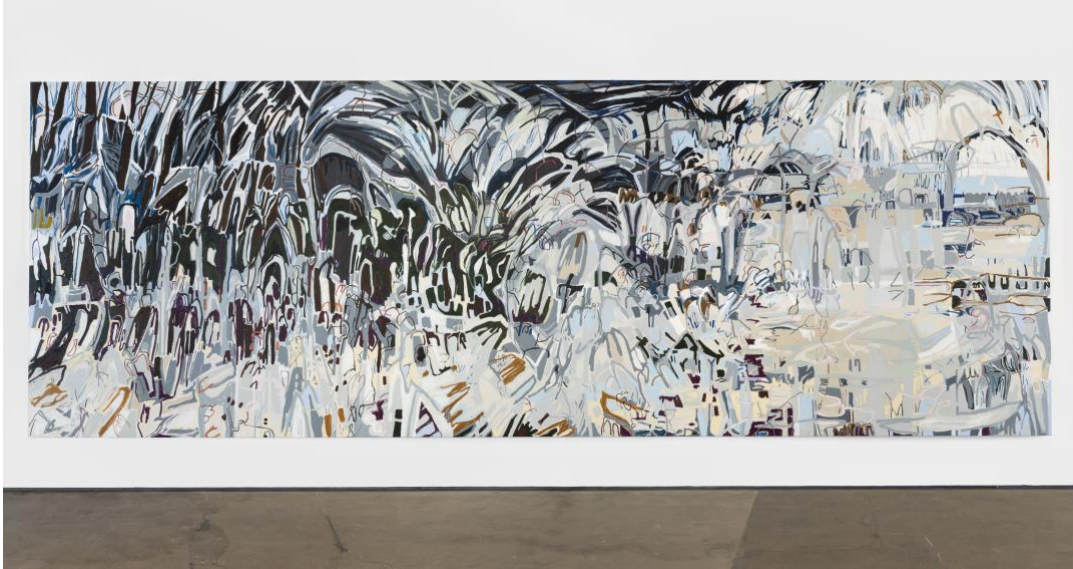
For all inquiries, please contact the gallery at info@skny.com

For more information on the fair, including hours and ticketing information, please visit artbasel.com

Image caption: Callum Innes, Exposed Painting Caribbean Turquoise, 2021, oil on linen, 92 1/2 x 90 1/2 inches (235 x 230 cm) © Callum Innes, Courtesy: Sean Kelly, New York

Art Basel Miami Beach – Meridians M9, Janaina Tschäpe

SEANKELLY



Meridians Invitation only: Tuesday, November 30, 2021
Public days: December 2 – 4, 2021

Janaina Tschäpe's major painting *Between Veils of Blue and Grey, a Forest, 2021* is one of her most ambitious paintings to date. This bold new painting, part of Tschäpe's latest body of work, was made utilizing large, oil sticks in addition to the water-based pigments she previously employed, marking a fresh new direction in her oeuvre. This shift in both material and scale allows the artist to "draw" as one would with a pencil or pastel, in addition to painting with a brush, producing a body of work that represents a fundamental move towards larger and more resolute gestures. Perhaps the most important change affecting Tschäpe's recent work was brought on by the pandemic when she left the city to work in nature. Whilst her work has always referenced the natural world, it was primarily through an interior dialogue in the studio, conjuring memories and associations. Whilst physically surrounded by nature, Tschäpe experienced what the German Romantics referred to as *The Sublime*, the sense of awe or wonder aroused by one's feeling of relative insignificance in the face of nature's vast and grand beauty. In discussing her process Tschäpe states, "In nature, you expose yourself to the uncontrollable, the sublime; you do not switch off the sun, stop the wind, or silence the noises." Emphasizing the conjunction between human nature – emotional turbulence, expression, and freedom – and that of the physical world, this body of work is, for Tschäpe, also inspired by the late 18th-century German literary movement *Sturm und Drang*, which exalted nature, feeling, and human individualism.

For additional information on Janaina Tschäpe, please visit skny.com

For all other inquiries, please email Cecile Panzieri at Cecile@skny.com

Image caption: Janaina Tschäpe, *Between Veils of Blue and Grey, a Forest, 2021*, casein, oil stick and oil pastel on canvas, 116 1/2 x 335 1/4 inches © Janaina Tschäpe, Photography: Adam Reich, NY, Courtesy: Sean Kelly, New York