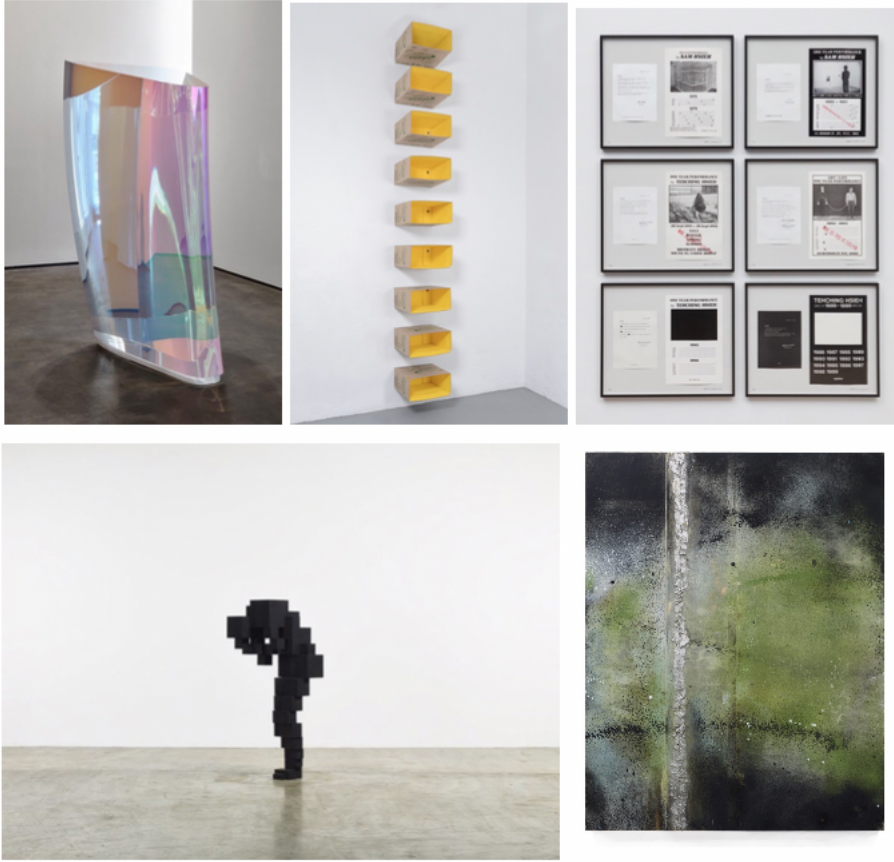


SEANKELLY



Taipei Dangdai

January 18 – 20, 2019

Booth B11

台北當代藝術博覽會 2019 1/18-1/20

B11 展位

Sean Kelly is delighted to announce our participation in the inaugural edition of the Taipei Dangdai art fair. Our booth, B11, will feature a dynamic, carefully curated presentation of works by Gallery artists that reflects the global diversity and conceptual engagement for which our program is famous. This selection of new and iconic works by artists including **Marina Abramović, James Casebere, Julian Charrière, Jose Dávila, Antony Gormley, Ilse D'Hollander, Tehching Hsieh, Callum Innes, Idris Khan, Hugo McCloud, Mariko Mori, Sam Moyer, Janaina Tschäpe, Liu Wei, James White** and **Sun Xun** exemplify the Gallery's ongoing commitment to presenting important contemporary art.

尚凱利畫廊很榮幸能參與首屆台北當代藝術博覽會（後簡稱「台北當代」），我們的展區位於 B11，精心規劃的展覽將帶來豐富的內容，包括瑪莉娜·阿布拉莫維奇、詹姆斯·卡

SEANKELLY

斯比爾、朱利安·夏利耶、荷西·達維拉、安東尼·葛姆雷、伊爾莎·霍蘭德、謝德慶、卡勒·英納斯、伊德里斯·汗、雨果·麥克勞德、森萬里子、珊姆·莫耶、賈奈娜·查普、劉煒、詹姆斯·懷特、孫遜等藝術家的新作及經典作品，呈現藝廊豐富多元的國際當代藝術面貌，也展現其專業領域努力不輟的耕耘。

We will present significant early work by **Marina Abramović**. Published by the gallery in 1994 and rarely seen outside of museum context, this work is part of the artist's early solo performances from 1973-1975. The inclusion of this work at the fair highlights the three-decade professional collaboration between Marina Abramović, internationally recognized as the most significant figure in the history of performance art, and the gallery.

本次將展出瑪莉娜·阿布拉莫維奇 1973 年至 1975 年間個人表演的部分內容，為藝術家早期的重要創作，畫廊於 1994 年出版，極其難得在美術場館之外展出。本次在台北當代呈現這位國際知名的殿堂級行為藝術家，在過去三十年間與畫廊的合作成果。

American born, **James Casebere** is a pioneer in the field of constructed photography. For over thirty years Casebere has created increasingly complex models based on architectural, art historical and cinematic sources. These table-sized tableaux are made of simple material pared down to essential forms. His newest body of work, "Pavilions for the Future," imagines hybrid forms of buildings by the ocean.

美國藝術家詹姆斯·卡斯貝爾為「建構攝影」流派的先鋒，在至今三十多年的創作生涯中，從建築、藝術史、電影中汲取靈感，創造出複雜的模型，而這些桌面大小的場景是由一些簡易物件所構成的基本形式。卡斯貝爾最新的作品〈Pavilions for the Future〉描繪他想像中位於海邊的各式建築。

Swiss artist **Julian Charrière**, whose work is concurrently on display at Taipei Fine Arts Museum as part of the **Taipei Biennial**, will be represented by his *Metamorphism* series. An amalgam of cultural memories incorporated into a geological matrix, these sculptures are displayed in vitrines like topological fragments from a futuristic natural history museum. Charrière's work draws on ideas about ephemerality, the passage of time and humanities ill-conceived environmental impact.

瑞士藝術家朱利安·夏利耶的作品現正同步於台北雙年展 (2018/11/17 - 2019/03/10) 展出，並將以〈Metamorphism〉系列作參加台北當代。作品將文化記憶融入地質環境，雕塑被放置在玻璃櫥窗內展示，像是在未來感的自然歷史博物館中觀看拓撲學片段。夏利耶的作品以「無常性」為主題，描繪時間的流逝，以及人類因欠缺思量對環境所造成的影響。

Born and based in Guadalajara, Mexico, **Jose Davila** produces a varied body of work that playfully and critically explores the visual tropes and iconic symbols of modern art, architecture and urban design. Drawing on his formal training as an architect, Dávila creates sculptural installations and photographic works that simultaneously emulate,

SEANKELLY

critique and pay homage to 20th century avant-garde art and architecture. Davila's work was recently included in an exhibition at the Yuz Museum Shanghai in the fall of 2018.

荷西·達維拉出生於墨西哥瓜達拉哈拉，近期曾於 2018 年秋天在余德耀美術館展出。他的作品型態多變，以戲謔般的批判手法探討當代藝術、建築及都市設計中的視覺隱喻與經典符號。達維拉運用過去在建築領域受過的訓練為根基，創作出雕塑裝置及攝影，效仿、批判二十世紀前衛藝術和建築的同時，也對其表達致意。

We will also present important sculptures by British artist **Antony Gormley**, who is internationally recognized for his sculptures, drawings, installations, and public works that investigate the relationship of the human body to space. Throughout his career, Gormley's celebrated work in all media has confronted the fundamental questions of where human beings stand in relation to nature and the cosmos. Gormley was awarded the Turner Prize in 1994, and many other international awards.

安東尼·葛姆雷為英國非常重要的藝術家，曾獲頒 1994 年透納獎及其他多項國際大獎，本次台北當代將展出他的雕塑創作。葛姆雷透過雕塑、繪畫、裝置以及公共藝術，探討人類與空間的關係，他創作生涯中知名的跨媒材創作，都對人類之於大自然和宇宙的存在提出質疑。

Belgian artist, **Ilse D'Hollander** (b. 1968 – d.1997) created work during a very brief period, from 1989 until her early, unexpected and tragic death at the age of 29.

D'Hollander's oeuvre exhibits a highly developed sense of color, composition, scale and surface, through the use of subtle tones and pared down compositions. An artist's artist, her canvases and works on paper favor abstraction, yet subtly allude to the everyday, hinting at nature and the landscape of the Flemish countryside where she spent the last and most productive years of her life.

比利時藝術家伊爾莎·霍蘭德 (1968-1997) 自 1989 年開始創作，29 歲即悲劇地早逝。她的作品有著溫柔細緻的調性及簡約的構圖，並深刻展現對色彩、構圖、比例、外型的高度掌握能力。霍蘭德極具藝術天份，偏好在畫布或紙上畫出抽象風格，同時暗示著日常風景。在作品中，隱約能看見法蘭德斯郊區的大自然風光，那是他晚年度過餘生並留下大量創作的地方。

Renowned Taiwanese performance artist **Tehching Hsieh**, who represented his country at the 2017 Venice Biennale, is widely recognized for his durational performance works which challenge ideas of isolation, security, and freedom. The set of six limited edition posters and statements we will present document the continuous yearlong performances and actions Hsieh enacted in New York City between 1978 – 1999. These documents trace Hsieh's abiding and radical interest in exploring conflict in the relationship of the human body to its natural environment.

台灣國際知名的行為藝術家謝德慶，2017 年曾代表台灣參加威尼斯雙年展。他以長時間實踐的行為藝術為名，探討孤獨、安全、自由等相關主題。本次將於台北當代展出的六件

SEANKELLY

限量海報及作品自述，是他於 1978 年至 1999 年間在紐約進行數年行為藝術的縮影，展現他熱衷於探索人類與自然環境衝突的創作軌跡。

Internationally renowned Scottish artist **Callum Innes** is recognized as one of the most significant abstract painters of his generation. Innes's process involves an interplay between additive and subtractive processes—continually adding and removing pigment—to achieve sophisticated and contemplative abstractions. Concurrent with the fair, Innes will have a solo exhibition of new paintings at the Sean Kelly Asia project space in Taipei.

來自蘇格蘭的卡勒·英納斯，在同期藝術家中被視為最重要的抽象畫家之一，他以持續「增加」、「去除」顏料的過程來進行創作，交互使用增減顏料的手法，創造出精細純熟的抽象作品。除了在台北當代藝博展出外，尚凱利畫廊於台北項目空間也將同時推出英納斯的個展，帶來他的全新畫作。

British artist **Idris Khan**, produces work that inhabits the space between abstraction and figuration. Drawing on diverse cultural sources including literature, history, art, music and religion, Khan has developed a unique narrative involving densely layered imagery that speaks to themes of history, cumulative experience and the metaphysical collapse of time into single moments. Khan was recently commissioned to create the first site-specific artwork for the British Museum, London.

英國藝術家伊德里斯·汗的創作風格介於抽象與具象之間，他以文學、歷史、藝術、音樂、宗教等多種文化元素作為靈感，發展出獨特的敘事手法，如以層層疊加的構圖闡述歷史主題、累積的經驗，使時間形而上瓦解凝結成單一片刻。卡恩近期受大英博物館委託，將為館方製作他的首件現地創作。

New York based artist **Hugo McCloud** will be represented by a work from his “Metal Painting” series. Inspired by the rawness of the urban landscape, McCloud's creates rich, large-scale abstract paintings and sculptural objects by fusing unconventional industrial materials—tar, bitumen, oxidized steel plates—with traditional pigment and woodblock printing techniques. His process is instinctive and physical, driven by an enduring desire to uncover beauty in the overlooked.

紐約藝術家雨果·麥克勞德將呈現其《Metal Painting》系列中的一件作品。藝術家受都市風景中的能量啟發，創造出風格濃烈、大件尺寸的抽象畫作，同時他也使用不尋常的工業物件，熔合焦油、瀝青、氧化鋼板，結合傳統顏料和版畫技術創作雕塑。他的創作過程充滿直覺性及勞動性，持續探尋容易為人們忽略而潛藏的美。

Japanese artist **Mariko Mori** will be featured on the booth with a single, monumental sculpture, *Plasma Stone I*, 2017-2018. Mori's artistic practice explores universal questions at the intersection of life, death, reality and technology; this sculpture represents her interpretation of the beginning of the universe, a memory of its plasma state following the Big Bang, which is represented throughout the piece in a full spectrum of color. Other works from this series are in museums worldwide.

SEANKELLY

日本藝術家森萬里子的創作經常探索宇宙問題——生 / 死、真實世界 / 科技虛擬間的交界；本次將出展的大型單件雕塑〈Plasma Stone I〉（2017-2018），是她對宇宙初始的個人詮釋，雕塑中橫跨光譜的顏色，代表宇宙大爆炸後呈現的電漿狀態。此系列其他作品同時也已被世界各地的美術館所收藏。

New York based artist **Sam Moyer** has developed a distinctive language of abstraction that considers questions of value, labor and beauty. Her practice has evolved from its more conceptual and process-based origins to address formal and theoretical issues regarding the construct of painting. In her work, issues of scale and space remain critical. Moyer is particularly interested in the way architecture functions in tandem with her objects to create dynamic visual experiences.

紐約藝術家珊姆·莫耶發展個人獨特的抽象藝術語言，探討他對於價值、勞動和美的疑問。她的藝術實踐由概念出發，並以過程為主導，透過繪畫結構呈現嚴謹、理論性的基調，其中比例和空間感是很關鍵的元素。莫耶特別著迷於建築與其他物件的共同作用，並藉此創造出生動的視覺經驗。

In October 2018, the gallery opened its first solo exhibition of new work by German-Brazilian artist **Janaina Tschäpe**. Noted for her atmospheric abstractions that blur perceptions of illusion and reality, Tschäpe's work incorporates themes of aquatic, plant and human life to suggest dreamlike, abstract landscapes. Our presentation in Taipei will feature a selection of works in watercolor on paper and a large-scale painting.

2018年十月，紐約尚凱利畫廊首次推出德國藝術家賈奈娜·查普的個展，查普的抽象繪畫具有飄逸空靈的情調，模糊幻想與現實的邊界；內容則描繪水、植物、人類，塑造如夢一般的抽象場景。本次於台北當代將展出其水彩及大型繪畫。

Beijing-based artist **Liu Wei's** exhibition *180 Faces*, presented at our New York space in May 2018, was the artist's first exhibition in the United States in sixteen years. His series of 180 "psychological portraits" conjured references as diverse as Velasquez and Van Gogh, Cezanne and Gauguin, Ensor and Brueghel, to depict the human condition. Like his Western forebears Francis Bacon and Lucien Freud, Liu Wei is a master of rendering human flesh and combining figuration with abstraction.

2018年五月，紐約尚凱利畫廊舉辦北京藝術家劉煒的展覽《180 Faces》，這是藝術家16年來首次在美國的展出。劉煒作品從各個經典藝術史人物，包括維拉斯奎茲和梵谷、塞尚和高更、詹姆斯·恩索和老布勒哲爾的創作中變幻出對於人的狀態的描寫。如另外兩位西方前輩畫家法蘭西斯·培根和盧西安·弗洛伊德，劉煒也擅於轉譯人體，結合具象於抽象之中。

British artist **James White** is known for his luminous paintings, meticulously rendered exclusively in black and white and the shades in between. White's commitment to representational painting imbues his work with a fundamental permanence,

SEANKELLY

underscoring the continuity in moments of silence, doubt and repose that have been the subject of art for centuries. White's masterfully rendered moments of everyday life bear comparison to the quietude of paintings by the Flemish masters and Lucian Freud's early interiors.

英國藝術家詹姆斯·懷特的繪畫以光影鮮明的風格為人所知。他將物件精心繪成黑白及陰影，轉化藝術史中延續百年的常見主題。懷特的作品帶有事物恆存特質，強調沈靜、質疑、靜止中隱含的連續性。他以精湛手法描繪日常片刻，可比擬法蘭德斯早期畫家與盧西安·佛洛伊德早期室內畫作中呈現的靜謐。

Considered one of Asia's most talented young artists, **Sun Xun's** artistic practice combines exquisite craftsmanship with stylistic experimentation. Blurring the lines between drawing, painting, animation, film and installation, his work incorporates a wide array of materials and processes. Painting, woodcut, and traditional Chinese ink and charcoal drawing are often combined to create his expressionistic, stop-motion animated films.

孫遜為亞洲當代才華洋溢的年輕藝術家，其藝術實踐結合精湛工藝與實驗風格，打破素描、繪畫、動畫、電影、裝置之間的分野。他使用多種媒材和創作手法，並經常藉繪畫、版畫、中國傳統水墨、炭筆創作出具表現主義風格的動畫。

We look forward to welcoming you to our booth and connecting in Taipei.

Follow us on Instagram [@SeanKellyNY](#)

For all inquiries, please contact the gallery at 212.239.1181 or info@skny.com

尚凱利畫廊歡迎您至台北當代展位 B11 親臨觀展，我們期待與您的相遇。

IG : [@SeanKellyNY](#)

其他需求請電洽或 E-mail 給我們 : [212.239.1181](tel:212.239.1181) / info@skny.com

Images 1: Mariko Mori, *Plasma Stone I*, 2017-2018, Dichroic coated layered acrylic, Corian base, 76 3/8 x 31 1/2 x 44 1/8 inches 2: Jose Dávila, *Untitled*, 2017, cardboard boxes, acrylic paint and bottle caps, overall: 181 1/8 x 18 5/16 x 19 11/16 inches 3: Tehching Hsieh, *Tehching Hsieh 1978 - 1999*, posters and statements mounted on boards in 6 parts, each frame: 22 x 26 x 1 1/2 inches 4: Antony Gormley, *CLAMP II*, 2014, cast iron, 56 7/8 x 23 1/2 x 21 1/2 inches 5: Hugo McCloud, *interstice*, 2018, patina, oil stick, solder on solid bronze sheet, mounted on aluminum frame, 79 x 66 1/2 inches

1. 森萬里子 〈Plasma Stone I〉 / 2017-2018 / 人造石、壓克力、珠光顏料 / 76 3/8 x 31 1/2 x 44 1/8 (吋) 2. 荷西·達維拉 〈無題〉 / 2017 / 紙箱、壓克力、瓶蓋 / 整組 181 1/8 x 18 5/16 x 19 11/16 (吋) 3. 謝德慶 〈謝德慶 1978-1999〉 / 海報、作品自述裱於紙板 / 共六件，每件 22 x 26 x 1 1/2 (吋) 4. 安東尼·葛姆雷 〈CLAMP II〉 / 2014 / 鑄鐵 / 56 7/8 x 23 1/2 x 21 1/2 (吋) 5. 雨果·麥克勞德 〈interstice〉 / 2018 / 銅鑄、油畫棒、錫鎊於實心銅板裱鋁框 / 79 x 66 1/2 (吋)