

SEANKELLY

NXTHVN

RECLAMATION

June 30 - August 11, 2023

Front Gallery

(clockwise from left of entrance)



Athena Quispe

La Célula Que Explota, 2023

steel, indigo pigment, ink, polymer, pulverized citrine, glitter, and blood on canvas in two parts

each panel: 56 1/2 x 12 1/2 x 1 1/4 inches
(143.5 x 31.8 x 3.2 cm)

overall: 56 1/2 x 24 x 1 1/4 inches
(143.5 x 61 x 3.2 cm)

the work is accompanied by a signed certificate of authenticity

AQ-8.AB



Athena Quispe

Tawantinsuyo: Chinchasuyo, Antisuyo, Qollasuyo, Kontisuyo, 2023

cochineal, chlorophyll, human fluids, ink, polymer, steel, pulverized citrine, and powdered pigment in four parts

panel A: 46 x 9 7/8 x 1 1/4 inches
(116.8 x 25.1 x 3.2 cm)

panel B: 46 x 10 1/2 x 1 1/4 inches
(116.8 x 26.7 x 3.2 cm)

panel C: 46 x 10 x 1 1/4 inches (116.8 x 25.4 x 3.2 cm)

panel D: 46 x 13 x 1 1/4 inches (116.8 x 33 x 3.2 cm)

overall: 46 x 44 x 1 1/4 inches (116.8 x 111.8 x 3.2 cm)

the work is accompanied by a signed certificate of authenticity

AQ-4.ABCD



Athena Quispe

Blood Memory, 2023

cochineal, chlorophyll, human fluids, ink, polymer, steel, pulverized citrine, and powdered pigment in three parts

left sculpture: 193 x 23 3/4 x 1 1/2 inches
(490.2 x 60.3 x 3.8 cm)

center sculpture: 75 1/2 x 46 1/2 x 18 inches
(191.8 x 118.1 x 45.7 cm)

right sculpture: 193 x 19 x 1 1/2 inches
(490.2 x 48.3 x 3.8 cm)

overall: 193 x 91 x 18 inches (490.2 x 231.1 x 45.7 cm)

the work is accompanied by a signed certificate of authenticity

AQ-9

SEANKELLY



Athena Quispe

Psychic Warp, 2022

steel, torched oak, incense, cochineal, ink, bodily fluids, pulverized rose quartz, and glitter on canvas

86 x 27 x 11 inches (218.4 x 68.6 x 27.9 cm)

the work is accompanied by a signed certificate of authenticity

AQ-5



Athena Quispe

Cancion de mi Solloza Sangre, 2022

cochineal, chlorophyll, human fluids, ink, polymer, steel, pulverized citrine, and powdered pigment in three parts

left panel: 48 x 17 x 1 3/8 inches (121.9 x 43.2 x 3.5 cm)

center panel: 48 x 30 x 1 1/4 inches
(121.9 x 76.2 x 3.2 cm)

right panel: 49 x 17 3/8 x 1 3/8 inches
(124.5 x 44.1 x 3.5 cm)

overall: 52 x 74 x 1 3/8 inches (132.1 x 188 x 3.5 cm)

the work is accompanied by a signed certificate of authenticity

AQ-1.ABC

Entry Wall to Main Gallery



Capt. James Stovall V

Jesus and bird "1st and the 3rd", 2022

acrylic, oil pastel and charcoal on canvas with frame drawn on wall in acrylic paint pen

painting: 53 3/4 x 48 1/8 x 1 1/2 inches
(136.5 x 122.2 x 3.8 cm)

with drawn on frame and signature: 71 1/2 x 67 1/2 inches
(181.6 x 171.4 cm)

initialed by the artist, recto

signed and titled by the artist, verso

CJS-1

Top of Staircase



Ashanté Kindle

Beyond the Veil, 2023

hair styling strips and acrylic on wood panel
20 inches (50.8 cm) diameter

signed, titled and dated by the artist, verso

AsK-6

SEANKELLY



Ashanté Kindle

In this Place of Sweet Serenity, 2023

hair styling strips and acrylic on wood panel
36 inches (91.4 cm) diameter
signed, titled and dated by the artist, verso
AsK-7



Ashanté Kindle

A Part of You Lives in Me, 2023

hair styling strips and acrylic on wood panel
20 inches (50.8 cm) diameter
signed, titled and dated by the artist, verso
AsK-5



Donald Guevara

Hold Me Like You Love Me, 2023

four layers of resin, pigment prints, sandepley
33 x 19 x 3 inches (83.8 x 48.3 x 7.6 cm)
signed and dated by the artist, verso
DGu-3

Main Gallery
(clockwise from left of entrance)



Donald Guevara

Liberty Life, 2023

five layers of resin, pigment prints, sandepley
43 x 32 x 2 3/4 inches (109.2 x 81.3 x 7 cm)
signed and dated by the artist, verso
DGu-1



Donald Guevara

Mother HighJump, 2023

pastel on velour, gac 500, archival glue, resin, pigment
glitch border print, sandepley
37 1/2 x 47 x 2 5/8 inches (95.3 x 119.4 x 6.7 cm)
signed and dated by the artist, verso
DGu-7

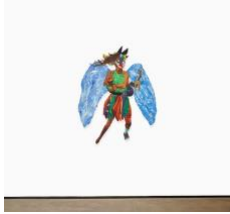


Donald Guevara

New American Quetzalcoatl (Ebony Alabaster), 2023

acrylic paint, oil pastel, graphite, army men, sandepley
51 x 69 1/4 x 5 inches (129.5 x 175.9 x 12.7 cm)
signed and dated by the artist, verso
DGu-4

SEANKELLY



Donald Guevara

Nuevo Ángel, 2023

acrylic paint on panel, oil pastel, watercolor, fabric,
bracelet from Copan, wings of a straw angel,
sandeplly wood

62 1/2 x 46 x 2 1/2 inches (158.8 x 116.8 x 6.3 cm)

signed and dated by the artist, verso

DGu-5



Edgar Serrano

Doctor Hardcore, 2023

oil on canvas

60 x 44 inches (152.4 x 111.8 cm)

signed, titled and dated by the artist, verso

ESe-5



Anindita Dutta

Sex, Sexuality, and Society: USA, 2023

used purse, used shoes, horns, fur

16 x 8 1/2 x 11 inches (40.6 x 21.6 x 27.9 cm)

signed, titled and dated by the artist, verso

ADu-10



Edgar Serrano

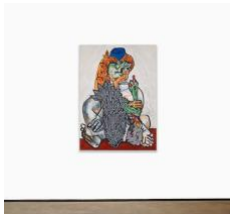
Secret Fire, 2023

oil on canvas

72 x 50 1/4 inches (182.9 x 127.6 cm)

signed, titled and dated by the artist, verso

ESe-2



Edgar Serrano

Shy Radical, 2023

oil on canvas

60 x 44 inches (152.4 x 111.8 cm)

signed, titled and dated by the artist, verso

ESe-4



Edgar Serrano

Eterna Soledad, 2023

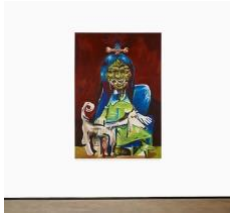
oil on canvas

72 x 50 1/4 inches (182.9 x 127.6 cm)

signed, titled and dated by the artist, verso

ESe-3

SEANKELLY



Edgar Serrano

Demons Never Die, 2023

oil on canvas

72 1/4 x 50 1/4 inches (183.5 x 127.6 cm)

signed, titled and dated by the artist, verso
ESe-1



Capt. James Stovall V

Judas, 2023

acrylic, oil pastel and charcoal on canvas

50 1/8 x 75 7/8 inches (127.3 x 192.7 cm)

initialed by the artist, recto

signed and titled by the artist, verso
CJS-2



Capt. James Stovall V

Country Boy at Roscoes/ Luke 22:19, 2023

acrylic, oil pastel and charcoal on canvas

56 x 50 1/8 inches (142.2 x 127.3 cm)

initialed by the artist, recto

signed and titled by the artist, verso
CJS-5



Capt. James Stovall V

Let the world spin without me tonight/ Mark 8:36, 2023

acrylic, oil pastel and charcoal on canvas

68 x 67 7/8 inches (172.7 x 172.4 cm)

initialed by the artist, recto

signed and titled by the artist, verso
CJS-4



Capt. James Stovall V

Shirley, 2023

acrylic, oil pastel and charcoal on linen

with wooden ledge and porcelain figures

painting: 36 x 34 inches (91.4 x 86.4 cm)

overall: 39 x 47 5/8 x 5 1/8 inches (99.1 x 121 x 13 cm)

initialed by the artist, recto

signed and titled by the artist, verso
CJS-3



Anindita Dutta

Sex, Sexuality, and Society - ICELAND, 2023

used shoe, used purse, horn, fur

12 3/4 x 6 x 12 1/2 inches (32.4 x 15.2 x 31.8 cm)

signed and dated by the artist, verso
ADu-7

SEANKELLY



Anindita Dutta

Sex, Sexuality, and Society - PANAMA, 2023
used shoes, horns, hand stitched fabric
35 x 21 x 6 inches (88.9 x 53.3 x 15.2 cm)
signed, titled and dated by the artist, verso
ADu-5



Anindita Dutta

Sex, Sexuality, and Society - GRENADA, 2023
hand-dyed marriage gown, hand-dyed used boots,
hand-dyed chair
86 x 71 x 20 inches (218.4 x 180.3 x 50.8 cm)
signed, titled and dated by the artist, verso
ADu-2



Anindita Dutta

Sex, Sexuality, and Society - SWEDEN, 2023
hand-dyed and hand-stitched clothes, used shoes,
animal horn
75 3/4 x 36 x 8 inches (192.4 x 91.4 x 20.3 cm)
signed, titled and dated by the artist, verso
ADu-3



Anindita Dutta

Sex, Sexuality and Society - BOTSWANA, 2023
used shoes, animal horn, hide
94 x 80 x 10 inches (238.8 x 203.2 x 25.4 cm)
signed, titled and dated by the artist, verso
ADu-1

Staircase Alcove

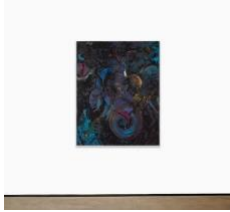


Capt. James Stovall V

I'm Comin' Back, 2023
mixed media installation
dimensions vary
CJS-6

SEANKELLY

Downstairs Gallery
(clockwise from left of entrance)



Ashanté Kindle

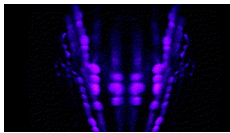
A Journey from the Crown, 2023

acrylic on canvas

59 7/8 x 47 7/8 x 1 1/2 inches (152.1 x 121.6 x 3.8 cm)

signed, titled and dated by the artist, verso

AsK-2



Ashanté Kindle

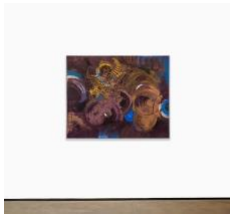
Embrace in the Darkest Hour, 2022

single-channel video, 2 min 6 sec

edition of 5 with 2 AP

the work is accompanied by a signed certificate of authenticity

AsK-1



Ashanté Kindle

Every Pathway Cleared, 2022

acrylic on canvas

48 x 59 7/8 x 1 1/2 inches (121.9 x 152.1 x 3.8 cm)

signed, titled and dated by the artist, verso

AsK-3



Ashanté Kindle

Total Adoration, 2022

hair bows, knockers, beads and barrettes, black
obsidian, glass stones and acrylic on canvas

76 1/16 x 72 3/16 x 1 1/2 inches

(193.2 x 183.4 x 3.8 cm)

signed, titled and dated by the artist, verso

AsK-4

SEANKELLY

Director's Office (Left)



Anindita Dutta

Sex, Sexuality, and Society: DENMARK, 2023

used purse, used shoes and fur

11 3/4 x 12 7/8 x 12 3/4 inches (29.8 x 32.7 x 32.4 cm)

signed, titled and dated by the artist, verso

ADu-11



Anindita Dutta

Sex, Sexuality, and Society - ESWATINI, 2023

hand dyed animal skin and used shoes, horns, fur and used cloth

37 1/2 x 47 1/2 x 11 1/4 inches (95.3 x 120.7 x 28.6 cm)

signed, titled and dated by the artist, verso

ADu-4

Director's Office (Right)



Donald Guevara

Clockwork Bling, 2021-2023

bamboo ply, archival pigment print, resin

29 1/2 x 29 1/2 x 2 1/2 inches (74.9 x 74.9 x 6.3 cm)

signed and dated by the artist, verso

DGu-6