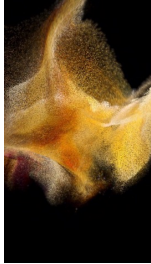


SEANKELLY

SHAHZIA SIKANDER

Weeping Willows, Liquid Tongues
November 5 - December 19, 2020

Front Gallery



SHAHZIA SIKANDER

Reckoning, 2020

HD video animation with sound; Music by

Du Yun featuring Zeb Bangash;

Animation by Patrick O'Rourke

duration: 4 min 16 sec

edition of 7 with 2 APs

the work is accompanied by a signed

certificate of authenticity

ShS-V.20.056

Entry to Main Gallery



SHAHZIA SIKANDER

Arose, 2019-2020

ink, gouache and gold on paper

paper: 70 x 51 3/4 inches

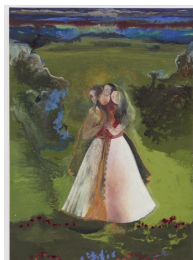
(177.8 x 131.4 cm)

framed: 75 7/16 x 57 x 2 3/16 inches

(191.6 x 144.8 x 5.6 cm)

ShS-WP.19/20.070

Main Gallery (clockwise from left of entrance)



SHAHZIA SIKANDER

Entwined, 2020

ink and gouache on paper

paper: 18 x 13 inches (45.7 x 33 cm)

framed: 24 5/8 x 19 5/8 x 1 1/2 inches

(62.5 x 49.8 x 3.8 cm)

ShS-WP.20.085



SHAHZIA SIKANDER

Embrace, 2020

graphite on paper

paper: 17 x 11 inches (43.2 x 27.9 cm)

framed: 20 9/16 x 17 9/16 x 1 1/2 inches
(52.2 x 44.6 x 3.8 cm)

ShS-WP.20.058



SHAHZIA SIKANDER

Empire Follows Art: States of Agitation 4,

2018

ink and gouache on paper

paper: 16 x 12 inches (40.6 x 30.5 cm)

framed: 21 11/16 x 18 5/16 x 1 1/2 inches
(55.1 x 46.5 x 3.8 cm)

signed by the artist, verso

ShS-WP.18.080



SHAHZIA SIKANDER

Empire Follows Art: States of Agitation 1,

2018

ink and gouache on paper

paper: 16 x 12 inches (40.6 x 30.5 cm)

framed: 21 11/16 x 18 5/16 x 1 1/2 inches
(55.1 x 46.5 x 3.8 cm)

signed by the artist, verso

ShS-WP.18.082



SHAHZIA SIKANDER

Empire Follows Art: States of Agitation 2,

2018

ink and gouache on paper

paper: 16 x 12 inches (40.6 x 30.5 cm)

framed: 21 11/16 x 18 5/16 x 1 1/2 inches
(55.1 x 46.5 x 3.8 cm)

signed by the artist, verso

ShS-WP.18.077



SHAHZIA SIKANDER

Empire Follows Art: States of Agitation 3,

2018

ink and gouache on paper

paper: 16 x 12 inches (40.6 x 30.5 cm)

framed: 21 11/16 x 18 5/16 x 1 1/2 inches
(55.1 x 46.5 x 3.8 cm)

signed by the artist, verso

ShS-WP.18.078



SHAHZIA SIKANDER

Promiscuous Intimacies, 2020

patinated bronze

42 x 24 x 18 inches

(106.7 x 61 x 45.7 cm)

edition of 5 with 2 APs

the work is accompanied by a signed
certificate of authenticity

ShS-S.20.066



SHAHZIA SIKANDER

X, 2019-2020

ink and gouache on paper

paper: 87 1/8 x 60 1/4 inches

(221.3 x 153 cm)

framed: 92 3/8 x 65 3/8 x 2 1/4 inches

(234.6 x 166.1 x 5.7 cm)

ShS-WP.19/20.074



SHAHZIA SIKANDER

Constitutions of the Globe, 2019-2020

ink, gouache and gold leaf on paper

paper: 92 x 60 1/4 inches

(233.7 x 153 cm)

framed: 97 3/16 x 65 5/8 x 2 1/4 inches

(246.9 x 166.7 x 5.7 cm)

ShS-WP.19/20.093



SHAHZIA SIKANDER

In sand lay Rustum by his son, 2019-2020

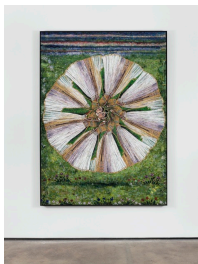
ink and gouache on paper

paper: 85 x 60 inches (215.9 x 152.4 cm)

framed: 89 3/8 x 65 1/2 x 2 3/16 inches

(227 x 166.4 x 5.6 cm)

ShS-WP.19/20.052



SHAHZIA SIKANDER

Arose, 2020

glass mosaic with patinated brass frame

mosaic: 83 1/8 x 59 7/8 inches

(211.1 x 152.1 cm)

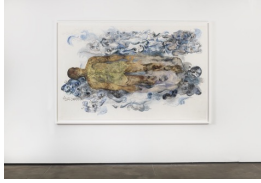
framed: 84 1/16 x 60 7/8 x 2 inches

(213.5 x 154.6 x 5.1 cm)

edition of 5 with 2 APs

the work is accompanied by a signed
certificate of authenticity

ShS-S.20.065



SHAHZIA SIKANDER

Kinship, 2019-2020

ink and gouache on paper

paper: 60 x 96 inches (152.4 x 243.8 cm)

framed: 65 5/8 x 99 1/4 x 2 1/4 inches

(166.7 x 252.1 x 5.7 cm)

ShS-WP.19/20.053



SHAHZIA SIKANDER

Flared, 2020

ink and gouache on paper

paper: 98 x 51 inches (248.9 x 129.5 cm)

framed: 103 1/8 x 57 1/8 x 2 3/16 inches

(261.9 x 145.1 x 5.6 cm)

ShS-WP.20.094



SHAHZIA SIKANDER

Shroud, 2020

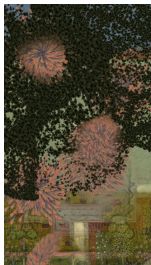
ink and gouache on paper

paper: 98 x 51 inches (248.9 x 129.5 cm)

framed: 103 1/8 x 57 1/8 x 2 3/16 inches

(261.9 x 145.1 x 5.6 cm)

ShS-WP.20.055



SHAHZIA SIKANDER

Disruption as Rapture, 2016

HD video animation with 7.1 surround

sound; Music by Du Yun featuring Ali

Sethi; Animation by Patrick O'Rourke;

Commissioned by the Philadelphia

Museum of Art

duration: 10 minutes 7 seconds

edition of 3 with 2 APs

the work is accompanied by a signed

certificate of authenticity

ShS-V.16.001



SHAHZIA SIKANDER

Oil and Poppies, 2019-2020

ink and gouache on paper

paper: 98 x 51 inches (248.9 x 129.5 cm)

framed: 103 1/8 x 57 1/8 x 2 3/16 inches

(261.9 x 145.1 x 5.6 cm)

ShS-WP.19/20.054



SHAHZIA SIKANDER

Sub Blues, 2019-2020

ink and gouache on paper

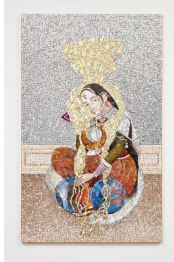
paper: 98 1/2 x 52 inches

(250.2 x 132.1 cm)

framed: 103 7/8 x 57 5/16 x 2 3/16 inches

(263.8 x 145.6 x 5.6 cm)

ShS-WP.19/20.076



SHAHZIA SIKANDER

The Perennial Gaze, 2018

glass mosaic mounted on plywood in

brass frame

70 1/4 x 43 1/4 inches (178.4 x 109.9 cm)

edition of 4 with 1 AP

the work is accompanied by a signed

certificate of authenticity

ShS-S.18.041

West Vitrine



SHAHZIA SIKANDER

Empire Follows Art: States of

Agitation 11, 2020

mixed media on paper

paper: 16 x 12 inches (40.6 x 30.5 cm)

ShS-WP.20.097



SHAHZIA SIKANDER

The Shadow's Struggle, 2, 2020

ink, gouache and gold on paper

paper: 15 x 11 1/2 inches (38.1 x 29.2 cm)

signed by the artist, verso

ShS-WP.20.100



SHAHZIA SIKANDER

The Shadow's Dance, 2019

ink, gouache and gold on paper

paper: 15 x 11 1/2 inches (38.1 x 29.2 cm)

signed by the artist, verso

ShS-WP.19.063



SHAHZIA SIKANDER

Empire Follows Art: States of Agitation 10, 2020
mixed media on paper
paper: 16 x 12 inches (40.6 x 30.5 cm)
ShS-WP.20.096



SHAHZIA SIKANDER

Squaring the Shadow, 2019
ink, gouache and gold on paper
paper: 15 x 11 1/2 inches (38.1 x 29.2 cm)
signed by the artist, verso
ShS-WP.19.061



SHAHZIA SIKANDER

Empire Follows Art: States of Agitation 9, 2020
ink and gouache on paper
paper: 16 x 12 inches (40.6 x 30.5 cm)
ShS-WP.20.095

East Vitrine



SHAHZIA SIKANDER

Empire Follows Art: States of Agitation 12, 2020
ink and gouache on paper
paper: 16 x 12 inches (40.6 x 30.5 cm)
ShS-WP.20.098



SHAHZIA SIKANDER

Empire Follows Art: States of Agitation 8, 2020
mixed media on paper
paper: 16 x 12 inches (40.6 x 30.5 cm)
ShS-WP.20.079



SHAHZIA SIKANDER

Empire Follows Art: States of Agitation 6,
2020

ink and gouache on paper
paper: 16 x 12 inches (40.6 x 30.5 cm)
ShS-WP.20.081



SHAHZIA SIKANDER

Empire Follows Art: States of Agitation 7,
2020

ink and gouache on paper
paper: 16 x 12 inches (40.6 x 30.5 cm)
ShS-WP.20.084



SHAHZIA SIKANDER

The Shadow's Struggle, 1, 2020

ink, gouache and gold on paper
paper: 15 x 11 1/2 inches (38.1 x 29.2 cm)
signed by the artist, verso
ShS-WP.20.099



SHAHZIA SIKANDER

Facing the Shadow, 2019

ink, gouache and gold on paper
paper: 15 x 11 1/2 inches (38.1 x 29.2 cm)
signed by the artist, verso
ShS-WP.19.060

Downstairs Gallery



SHAHZIA SIKANDER

Parallax, 2013

three-channel, single-image HD video
animation with 5.1 surround sound,
music by Du Yun
duration: 15 minutes 26 seconds
edition of 3 with 1 AP
the work is accompanied by a signed
certificate of authenticity
ShS-V.13.057

Director's Office Left



SHAHZIA SIKANDER

Of Masks and Bull 1-2, 2017

ink and gouache on paper
paper: 14 x 11 inches (35.6 x 27.9 cm)
each

framed: 18 1/8 x 15 1/8 x 1 1/8 inches
(46 x 38.4 x 2.9 cm) each

signed and dated by the artist, verso
ShS-WP.17.025a,b

Director's Office Right



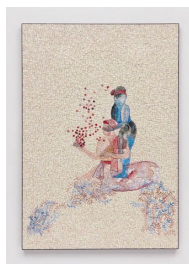
SHAHZIA SIKANDER

In Flight 1-2, 2017

ink and gouache on paper
paper: 14 x 11 inches (35.6 x 27.9 cm)
each

framed: 18 1/8 x 15 1/8 x 1 1/8 inches
(46 x 38.4 x 2.9 cm) each

signed and dated by the artist, verso
ShS-WP.17.024a,b



SHAHZIA SIKANDER

Double Sight, 2018

glass mosaic with patinated brass frame
mosaic: 62 15/16 x 44 inches
(159.9 x 111.8 cm)

framed: 63 3/16 x 44 1/4 inches
(160.5 x 112.4 cm)

edition of 4 with 1 AP

the work is accompanied by a signed
certificate of authenticity

ShS-S.18.039